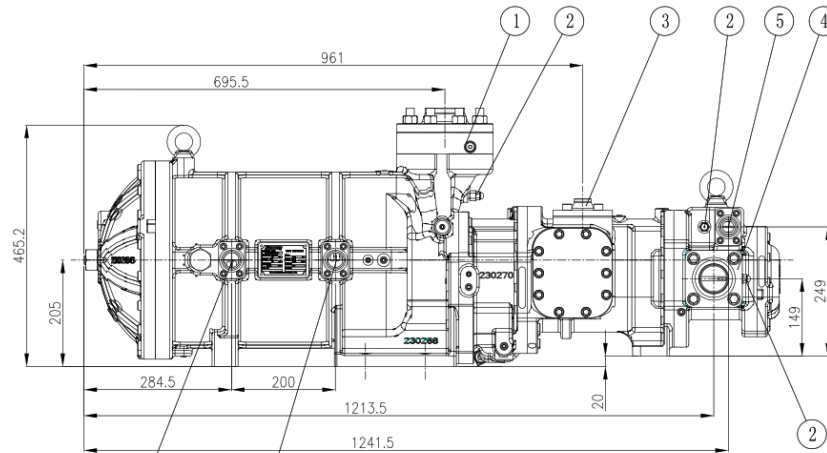


SRS1008 double-stage hermetic Compressor

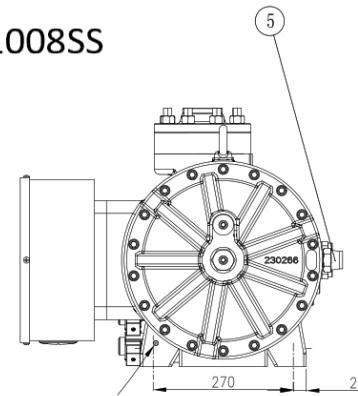
srmtecgroup.com/products/compressors/srs-1008/



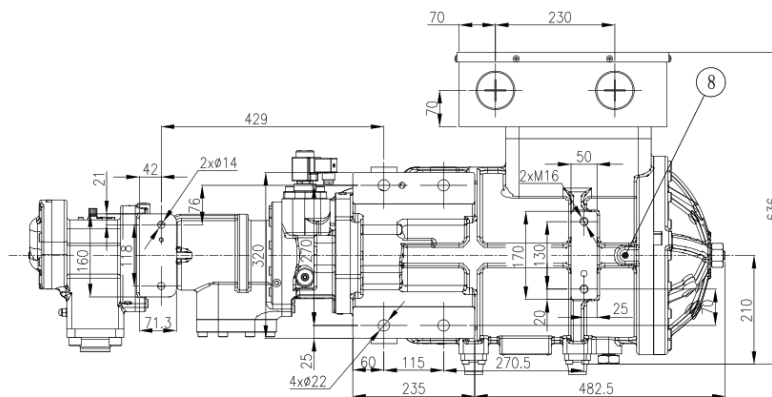
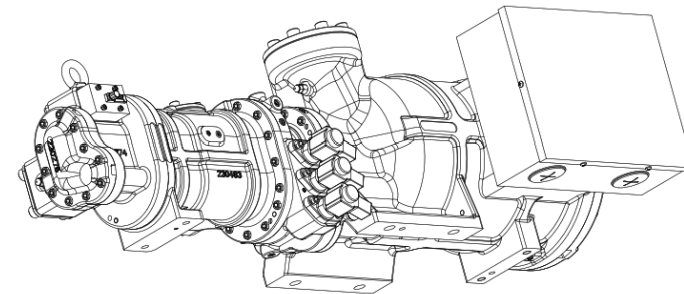
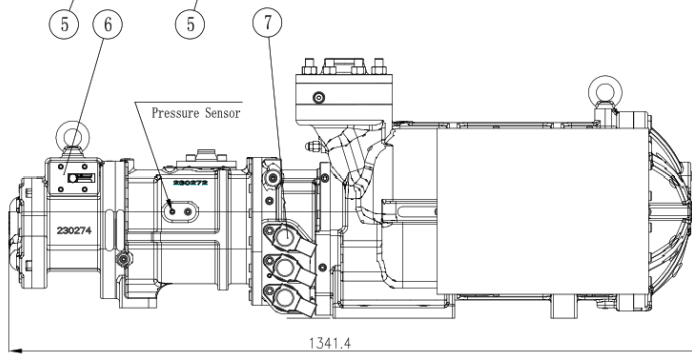
SRS1008 Series		
Model	SRS-1008SS	SRS-1008LL
Displacement @2960 rpm [m3/h]	141 / 52	221 / 82
Displacement @3600 rpm [m3/h]	171 / 63	268 / 99
Capacity Control	step control: 25%, 50%, 75%, 100% or step-less	
Max. rpm	3600	
Vi Control	fixed	
Vi adjustment range	2.5/3.0/4.5	
Rotation, onto compressor shaft	counter-clockwise, looking at the compressor input shaft	
Non-return valve suction side	Single flap check valve	
Suction inlet diameter [mm]	DN65	DN65
Discharge outlet diameter [mm]	DN50	DN50
Eco connection [mm]	DN25	DN25
Design pressure	26 bar	
Length [mm]	1342	1458
Width [mm]	636	636
Height [mm]	465	465
Weight [kg]	383	445



SRS1008SS



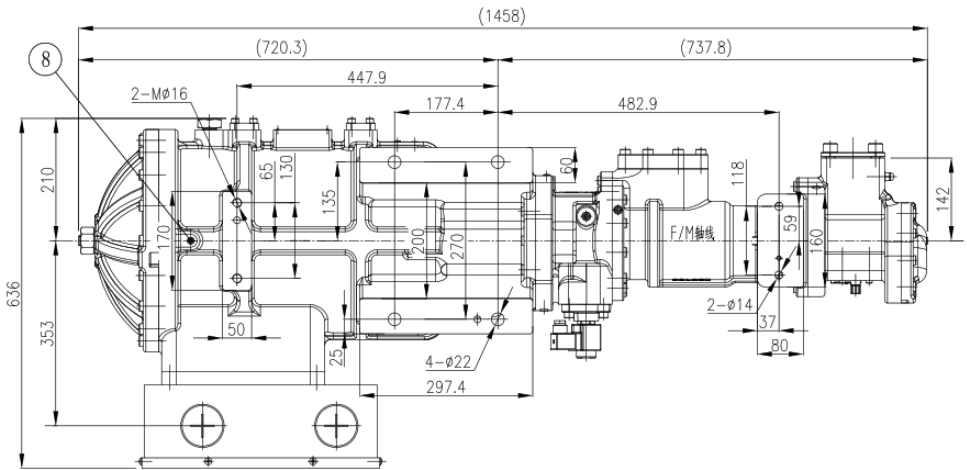
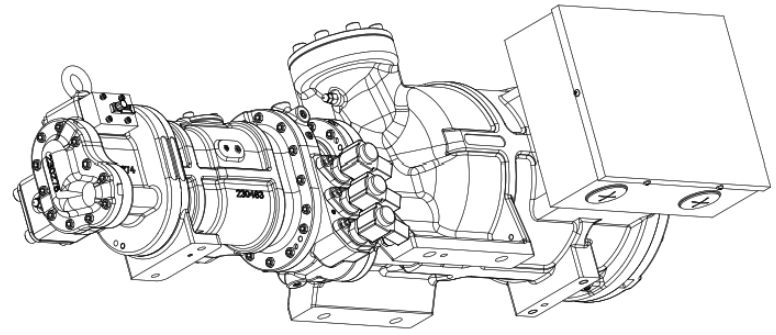
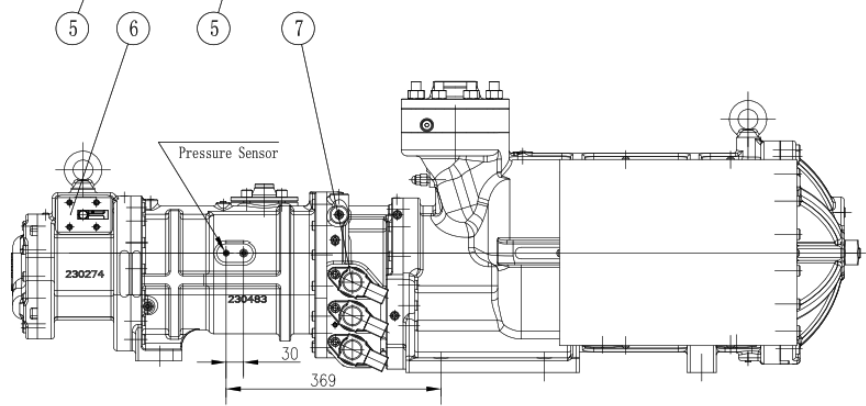
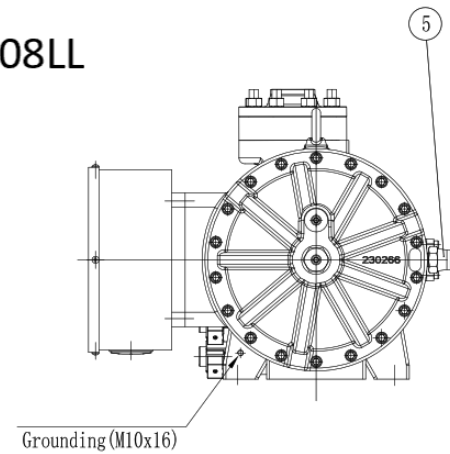
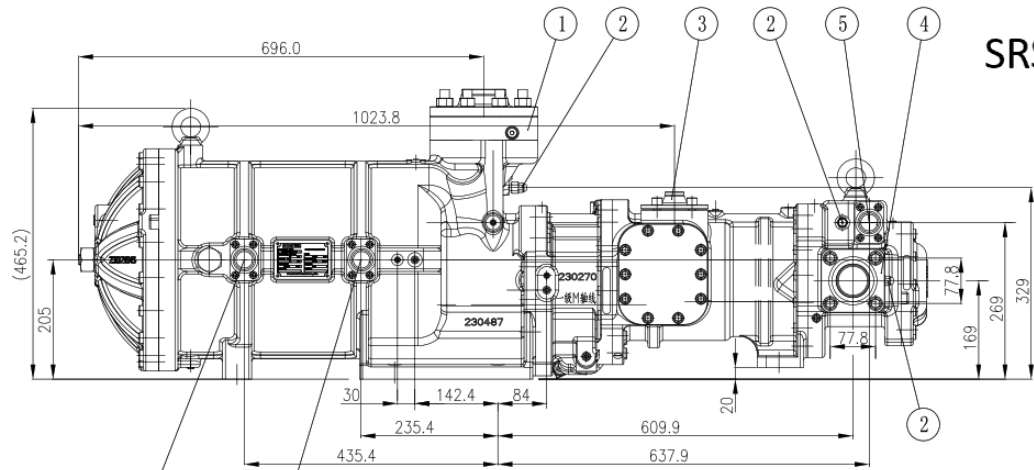
Grounding (M10x16)



KEY:

1. Single flap check valve/
Lift check valve (Optional)
(DN65 PN40)
2. Temperature sensor
3. ECO inlet port (DN25 PN40)
4. Discharge port (Ø50 PN40)
5. Oil inlet connection (DN25 PN40)
6. Oil flow switch
7. Solenoid valve
8. Oil Drainage (NPT 1/8")

SRS1008LL



- KEY:
- 1, Single flap check valve/
Lift check valve(Optional)
(DN65 PN40)
 - 2, Temperature sensor
 - 3, ECO inlet port (DN25 PN40)
 - 4, Discharge port (ø50 PN40)
 - 5, Oil inlet connection (DN25 PN40)
 - 6, Oil flow switch
 - 7, Solenoid valve
 - 8, Oil Drainage (NPT 1/8")