

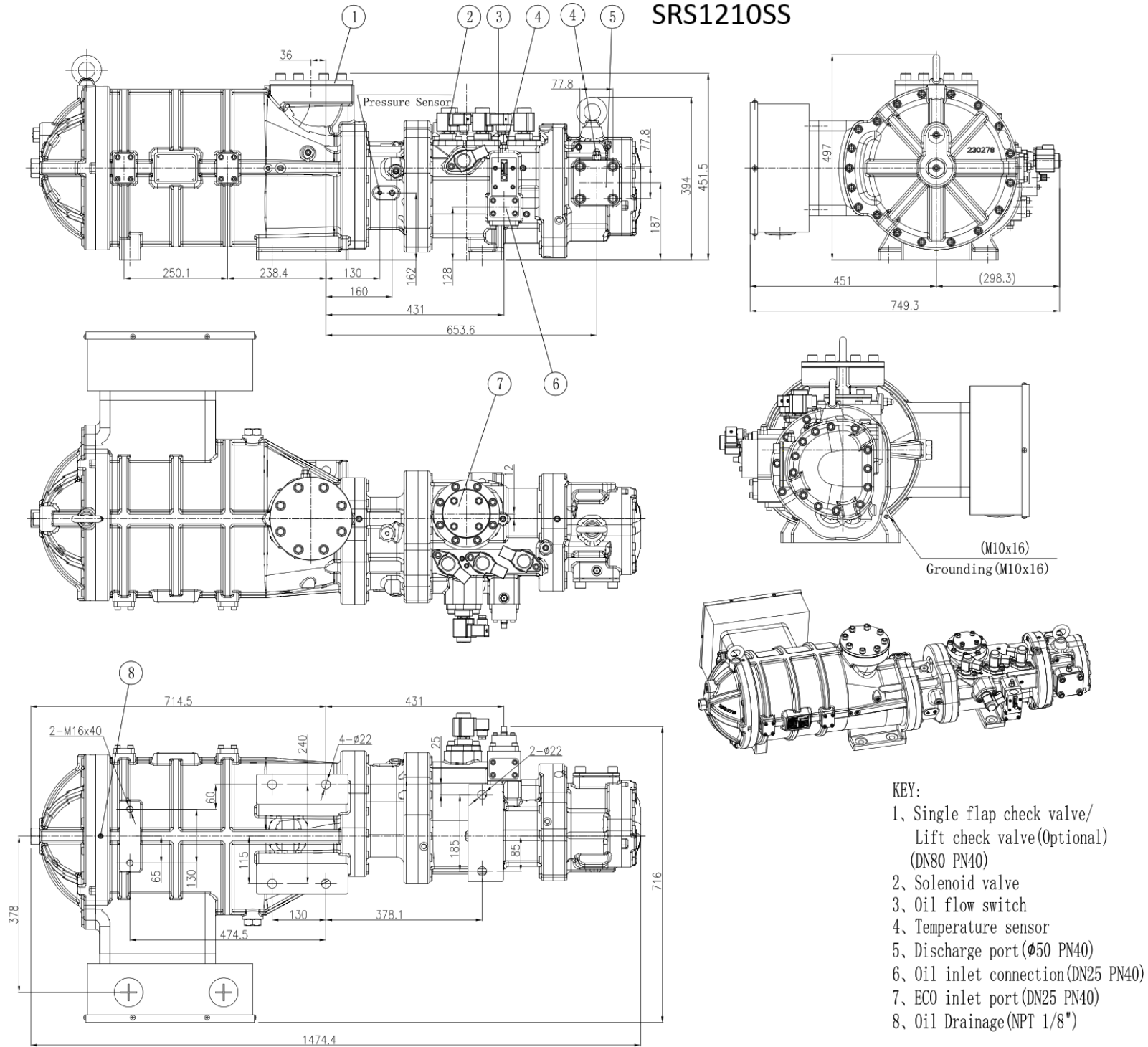
SRS1210 double-stage hermetic Compressor

srmtecgroup.com/products/compressors/srs-1210/



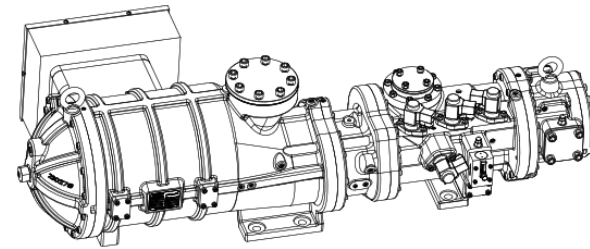
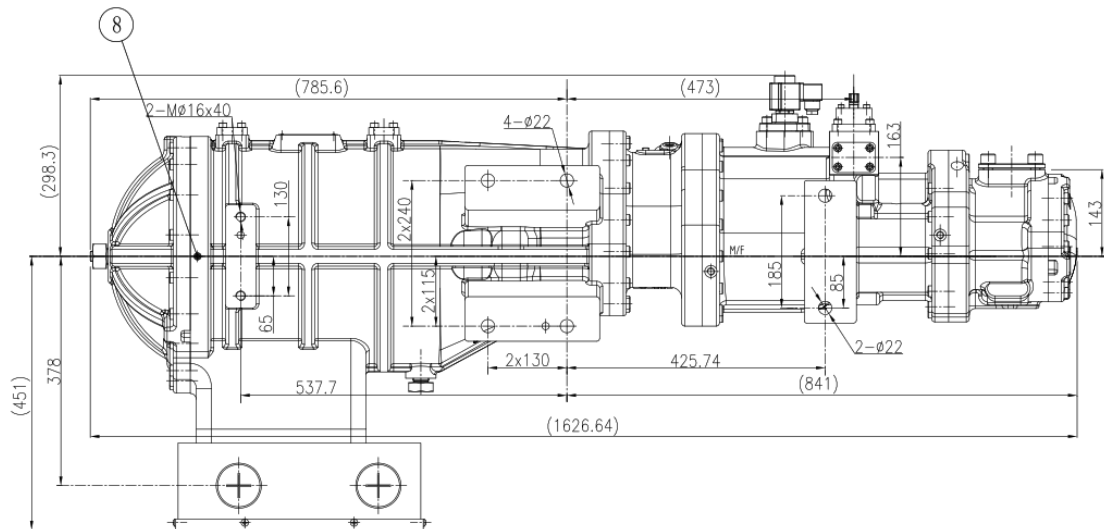
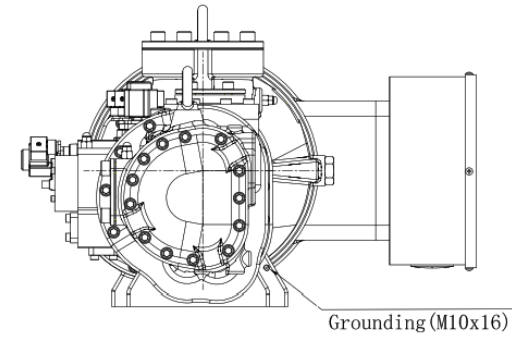
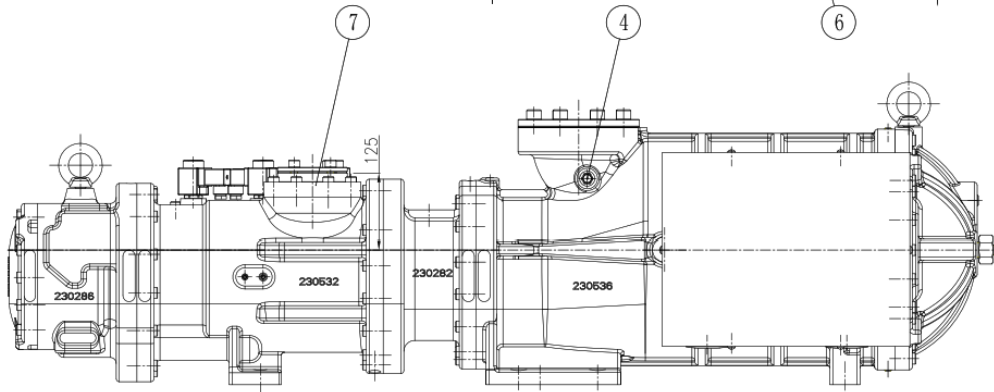
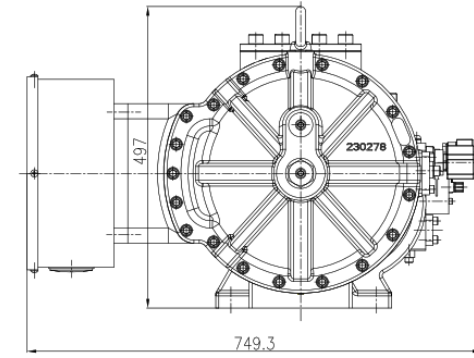
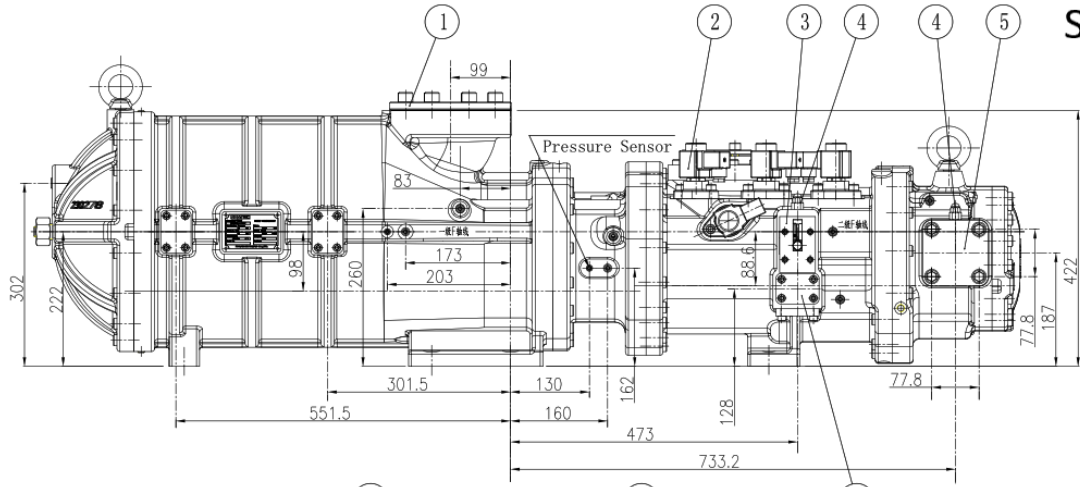
SRS1210 Series		
Model	SRS-1210SS	SRS-1210LL
Displacement @2960 rpm [m3/h]	332 / 123	436 / 166
Displacement @3600 rpm [m3/h]	403 / 149	563 / 201
Capacity Control	Step control: 25%, 50%, 75%, 100%; step-less	
Max. rpm	3600	
Vi Control	fix	
Vi adjustment range	2.5/3.0/4.5	
Rotation, onto compressor shaft	counter-clockwise, looking at the compressor input shaft	
Non-return valve suction side	Single flap check valve	
Suction inlet diameter [mm]	DN 80	DN 80
Discharge outlet diameter [mm]	DN 50	DN 50
Eco connection [mm]	DN 25	DN 25
Design pressure	28 bar	
Length [mm]	1475	1627
Width [mm]	750	750
Height [mm]	455	455
Weight [kg]	500	700

SRS1210SS



- KEY:
- 1, Single flap check valve/
Lift check valve (Optional)
(DN80 PN40)
 - 2, Solenoid valve
 - 3, Oil flow switch
 - 4, Temperature sensor
 - 5, Discharge port (ϕ 50 PN40)
 - 6, Oil inlet connection (DN25 PN40)
 - 7, ECO inlet port (DN25 PN40)
 - 8, Oil Drainage (NPT 1/8")

SRS1210LL



KEY:

- 1, Single flap check valve/
Lift check valve(Optional)
(DN80 PN40)
- 2, Solenoid valve
- 3, Oil flow switch
- 4, Temperature sensor
- 5, Discharge port($\phi 50$ PN40)
- 6, Oil inlet connection(DN25 PN40)
- 7, ECO inlet port(DN25 PN40)
- 8, Oil Drainage(NPT 1/8")